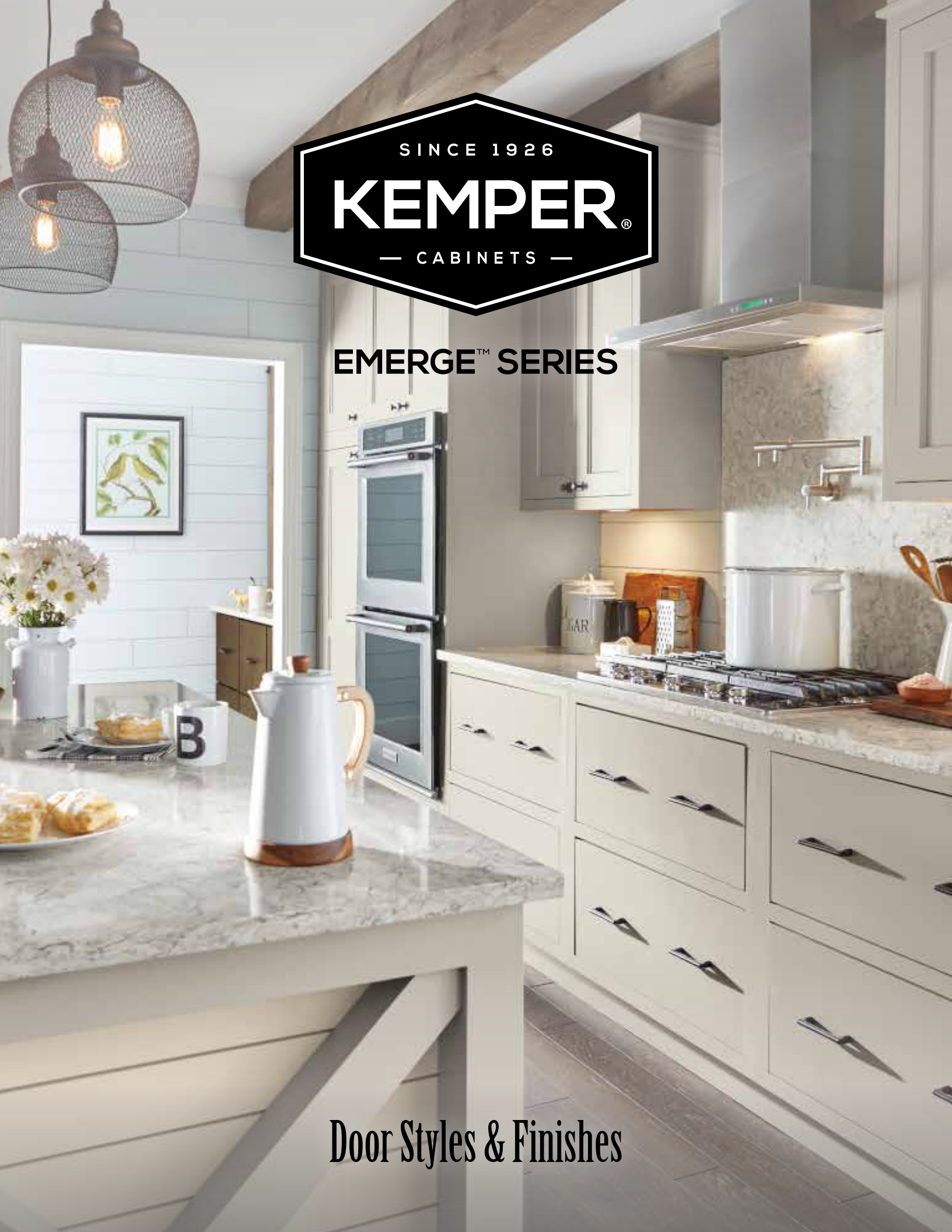




**EMERGE™ SERIES**



*Door Styles & Finishes*

# KEMPER®

## EMERGE™ SERIES

Masterful craftsmanship.  
Handsome color.™

---

Details matter. So does product integrity.  
Build a look that tells your story authentically  
with the substantial color offering and  
cultivated door constructions of the  
Kemper® Emerge™ Series.



\*Additional drawer front options are available. Ask your designer for details.

Also available in Choice™ Series.

- Ⓐ ALDER
- Ⓒ CHERRY
- Ⓜ MAPLE
- Ⓠ QUARTERSAWN OAK
- Ⓡ RUSTIC ALDER
- Ⓜ WALNUT
- Ⓛ MDF



Amstead  
Full Overlay  
5-Piece Drawer Front  
ⒶⒸⓂⓇⓈⓂ



Amstead  
Full Overlay  
Slab Drawer Front  
ⒶⒸⓂⓇⓈⓂ



Butler  
Full Overlay  
5-Piece Drawer Front  
ⒶⒸⓂⓇⓈⓂ



Butler  
Full Overlay  
Slab Drawer Front  
ⒶⒸⓂⓇⓈⓂ



Decker  
Full Overlay  
5-Piece Drawer Front  
ⒶⒸⓂⓇⓈⓂ



Decker  
Full Overlay  
Slab Drawer Front  
ⒶⒸⓂⓇⓈⓂ



Decker  
Inset  
Slab Drawer Front  
ⒶⒸⓂⓇⓈⓂ



Decker  
Beaded Inset  
Slab Drawer Front  
ⒶⒸⓂⓇⓈⓂ



Kirby  
Full Overlay  
5-Piece Drawer Front  
ⒶⒸⓂⓇⓈⓂ



Kirby  
Full Overlay  
Slab Drawer Front  
ⒶⒸⓂⓇⓈⓂ



Kirby  
Inset  
Slab Drawer Front  
ⒶⒸⓂⓇⓈⓂ



Kirby  
Beaded Inset  
Slab Drawer Front  
ⒶⒸⓂⓇⓈⓂ



Burke  
Full Overlay  
5-Piece Drawer Front  
ⒶⒸⓂⓇⓈⓂ



Burke  
Full Overlay  
Slab Drawer Front  
ⒶⒸⓂⓇⓈⓂ



Burke  
Inset  
Slab Drawer Front  
ⒶⒸⓂⓇⓈⓂ



Burke  
Beaded Inset  
Slab Drawer Front  
ⒶⒸⓂⓇⓈⓂ



Gordon  
Full Overlay  
5-Piece Drawer Front  
ⒶⒸⓂⓇⓈⓂ



Gordon  
Full Overlay  
Slab Drawer Front  
ⒶⒸⓂⓇⓈⓂ



Gordon  
Inset  
Slab Drawer Front  
ⒶⒸⓂⓇⓈⓂ



Gordon  
Beaded Inset  
Slab Drawer Front  
ⒶⒸⓂⓇⓈⓂ



Landry  
Full Overlay  
5-Piece Drawer Front  
ⒶⒸⓂⓇⓈⓂ



Landry  
Full Overlay  
Slab Drawer Front  
ⒶⒸⓂⓇⓈⓂ



Landry  
Inset  
Slab Drawer Front  
ⒶⒸⓂⓇⓈⓂ



Landry  
Beaded Inset  
Slab Drawer Front  
ⒶⒸⓂⓇⓈⓂ

\*Additional drawer front options are available. Ask your designer for details.

Also available in Choice™ Series.

- Ⓐ ALDER
- Ⓒ CHERRY
- Ⓜ MAPLE
- Ⓢ QUARTERSAWN OAK
- Ⓡ RUSTIC ALDER
- Ⓦ WALNUT
- Ⓜ MDF



Shanley  
Full Overlay  
5-Piece Drawer Front  
ⒶⒸⓂⓈⒸⓌ



Shanley  
Full Overlay  
Slab Drawer Front  
ⒶⒸⓂⓈⒸⓌ



Shanley  
Inset  
Slab Drawer Front  
ⒶⒸⓂⓈⒸⓌ



Shanley  
Beaded Inset  
Slab Drawer Front  
ⒶⒸⓂⓈⒸⓌ



Vinson  
Full Overlay  
5-Piece Drawer Front  
ⒶⒸⓂⓈⒸⓌ



Vinson  
Full Overlay  
Slab Drawer Front  
ⒶⒸⓂⓈⒸⓌ



Vinson  
Inset  
Slab Drawer Front  
ⒶⒸⓂⓈⒸⓌ



Vinson  
Beaded Inset  
Slab Drawer Front  
ⒶⒸⓂⓈⒸⓌ



Caprice  
Full Overlay  
Slab Drawer Front  
ⒶⒸⓂⓈⒸⓌ Ⓜ



Caprice  
Inset  
Slab Drawer Front  
Ⓜ



Caprice  
Beaded Inset  
Slab Drawer Front  
Ⓜ



Tate  
Full Overlay  
5-Piece Drawer Front  
ⒶⒸⓂⓈⒸⓌ



Tate  
Full Overlay  
Slab Drawer Front  
ⒶⒸⓂⓈⒸⓌ



Tate  
Inset  
Slab Drawer Front  
ⒶⒸⓂⓈⒸⓌ



Tate  
Beaded Inset  
Slab Drawer Front  
ⒶⒸⓂⓈⒸⓌ



Whitman  
Full Overlay  
5-Piece Drawer Front  
ⒶⒸⓂⓈⒸⓌ



Whitman  
Full Overlay  
Slab Drawer Front  
ⒶⒸⓂⓈⒸⓌ



Whitman  
Inset  
Slab Drawer Front  
ⒶⒸⓂⓈⒸⓌ



Whitman  
Beaded Inset  
Slab Drawer Front  
ⒶⒸⓂⓈⒸⓌ



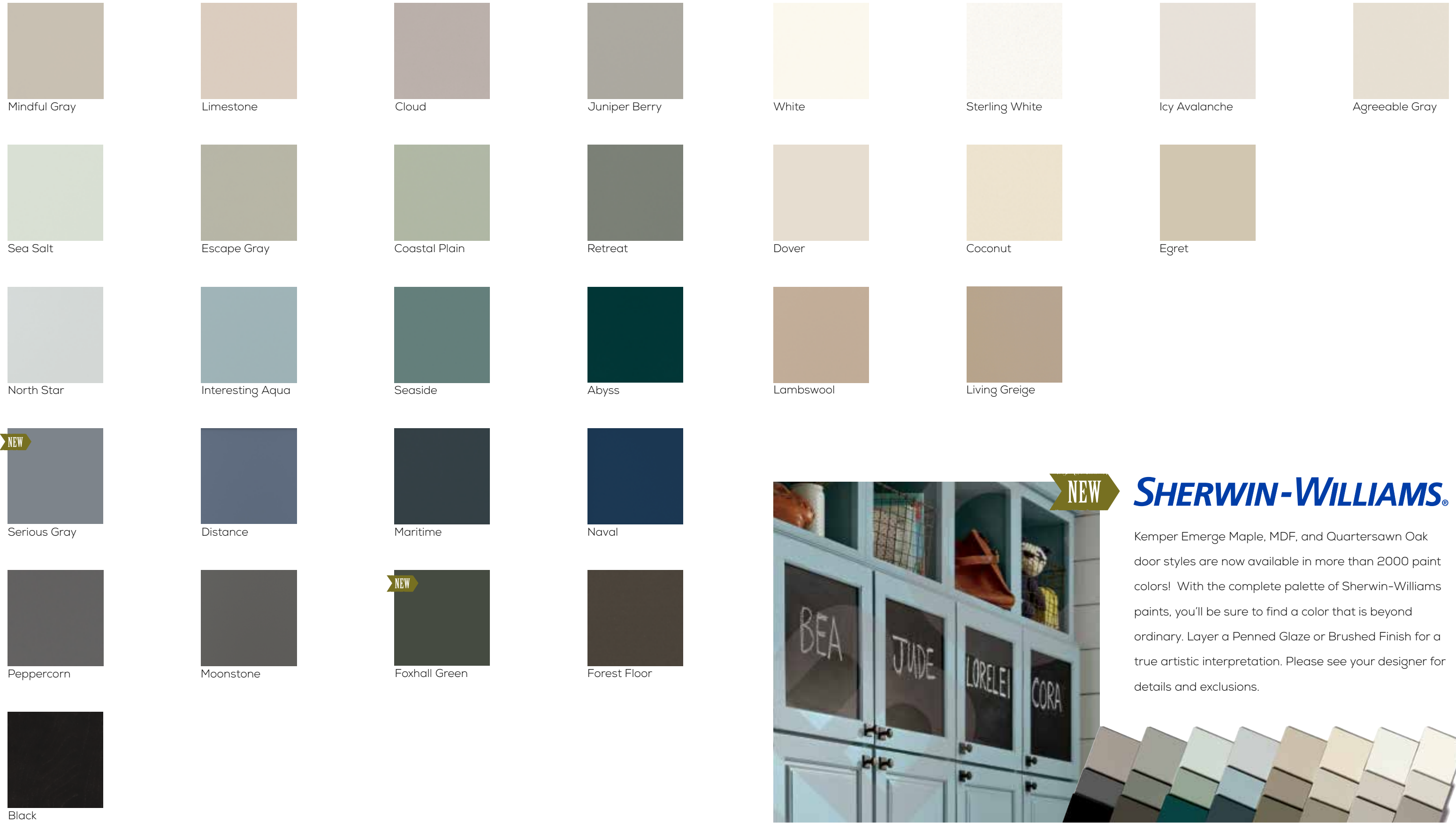
Northrope  
Full Overlay  
5-Piece Drawer Front  
ⒶⒸⓂⓈⒸⓌ



Northrope  
Full Overlay  
Slab Drawer Front  
ⒶⒸⓂⓈⒸⓌ

# Paints\*

Available on Maple, MDF and Quartersawn Oak.



Mindful Gray    Limestone    Cloud    Juniper Berry    White    Sterling White    Icy Avalanche    Agreeable Gray

Sea Salt    Escape Gray    Coastal Plain    Retreat    Dover    Coconut    Egret

North Star    Interesting Aqua    Seaside    Abyss    Lambswool    Living Greige

**NEW** Serious Gray    Distance    Maritime    Naval

Peppercorn    Moonstone    **NEW** Foxhall Green    Forest Floor

Black

\*When Maple painted finishes (Paints, Sherwin-Williams or Brushed Technique) are specified, the center panels of the selected style may be constructed of Medium Density Fiberboard (MDF). MDF provides a smoother finish when painted, and is more resistant to warping, expansion, and contraction.

**NEW** **SHERWIN-WILLIAMS®**

Kemper Emerge Maple, MDF, and Quartersawn Oak door styles are now available in more than 2000 paint colors! With the complete palette of Sherwin-Williams paints, you'll be sure to find a color that is beyond ordinary. Layer a Penned Glaze or Brushed Finish for a true artistic interpretation. Please see your designer for details and exclusions.

# Penned Glazes for Paints\*

Shown on Maple Coconut, available on most paints. See your designer for details.



Meringue (M) Nougat (M) Toasted Almond (M) Amaretto Crème (M) Grey Stone (M) Smoked Caviar (M)

# Brushed Finishes for Paints\*

Shown on Maple Coconut, available on most paints. See your designer for details.



Lakeshore (M)D Nightfall (M)D Timber (M)D

# Specialty Finishes

Shown on Maple. Available on species as indicated.



Alpaca (M)QW Dunes (NEW) (A)C(R)Q(W) Driftwood (A)C(M)R(Q)W Thicket (NEW) (A)C(R)Q(W) Worn Beachglass (M)Q Beachglass (M)Q



Cigar Box (A)C(R)Q(W) Balsamic Ombre (A)C(R)W Cordial Ombre (A)C(R)W Poppyseed (M)W Worn Black (M) Black Canyon (M)

# Stains

Shown on Maple, available on species as indicated.

(A) ALDER (Q) QUARTERSAWN OAK (D) MDF  
(C) CHERRY (R) RUSTIC ALDER  
(M) MAPLE (W) WALNUT



Natural (A)C(M)R(Q)W Sandpiper (A)C(M)R(Q)W Single Malt (A)C(M)R(Q)W Sahara (A)C(M)R(Q)W Cattail (A)C(M)R(Q)W Havana (A)C(M)R(Q)W



Marsala (A)C(R)W Tundra (A)C(M)R(Q)W Rodeo (A)C(M)R(Q)W Henna (A)C(M)R(Q)W Chocolate (A)C(M)R(Q)W



Boardwalk (A)C(M)R(Q)W Buckskin (A)C(M)R(Q)W Morel (A)C(M)R(Q)W Mustang (A)C(R)W



Seal (A)C(R)Q(W) Colt (NEW) (A)C(M)R(Q)W Boulder (A)C(M)R(Q)W Thatch (A)C(M)R(Q)W Stout (A)C(M)R(Q)W

# Stains with Cerused Finishes

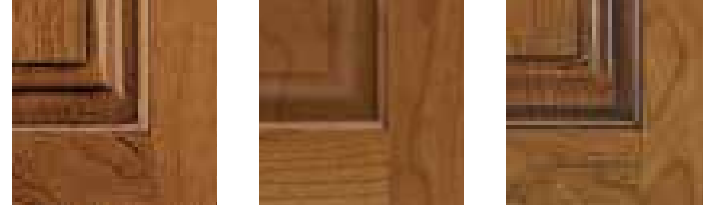


Buckskin Brindle (Q)W Buckskin Roan (Q)W Morel Brindle (Q)W Morel Roan (Q)W Seal Brindle (Q)W Seal Roan (Q)W

\*When Maple painted finishes (Paints, Sherwin-Williams or Brushed Technique) are specified, the center panels of the selected style may be constructed of Medium Density Fiberboard (MDF). MDF provides a smoother finish when painted, and is more resistant to warping, expansion, and contraction.

## Stains with Flooded Glazes

Available on species as indicated. In the flooded glaze process, the glaze material is sprayed onto the entire cabinet door and is then wiped off everywhere except in the highlight areas.



Ruddy  
Toasted Almond  
A C R W

Rye  
Toasted Almond  
A C M R Q W

Natural  
Toasted Almond  
A C M R W



Sandpiper  
Amaretto Crème  
A C R W

Rye  
Amaretto Crème  
C W

Marsala  
Amaretto Crème  
A C R Q W

- A ALDER
- C CHERRY
- M MAPLE
- Q QUARTERSAWN OAK
- R RUSTIC ALDER
- W WALNUT
- D MDF

## Stains with Penned Glazes

Shown on Maple. Available on species as indicated. In the penned glaze process, the glaze material is hand-applied to only the highlighted areas.



Natural  
Toasted Almond  
A C M R W

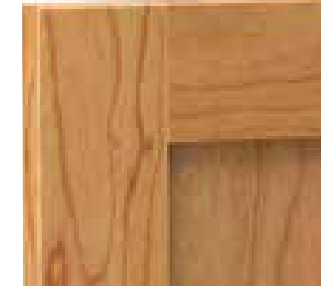
Natural  
Amaretto Crème  
A C M R W

## Outside Edge Door Profile Options

Every Emerge™ Series door style offers several outside edge profiles to tailor your look. It's amazing how seemingly small changes make such a drastic difference in the appearance of a door. From simple and straight to traditionally detailed, check which options are available on the styles you love and select the shape that suits your vision.



PROFILE #10



PROFILE #12



PROFILE #14



PROFILE #17



PROFILE #18



PROFILE #27

## Sheen Options

A choice in sheen can significantly alter the appearance of a door, especially those finished with medium to dark paints and stains where matte finishes are more noticeable. We have paired a Standard Sheen (top) with our new Matte Sheen (bottom) on this Burke Cherry Mustang door to illustrate the difference. Matte Sheen is available on all paints and standard stains.

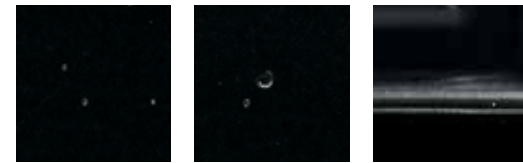


Standard Sheen v. Matte Sheen

# AGING TECHNIQUES

## TIMEWORN

This light distressing technique features random worm holes, tiny dents and light signs of wear to mimic the appearance of imperfections similar to those found on antiques.



Wormholes    Dents    Wear  
Shown on painted finish



Wormholes    Dents    Wear  
Shown on stained finish



## HEWN

This subtle technique mimics finish wear that naturally develops over time, and features a continuous but light sand-through along the sharp profiles to highlight the distinctive details of each door and drawer front. Sand-through may vary in thickness around the perimeter of a single door and throughout the entire room.



Light Sand-through  
Shown on painted finish

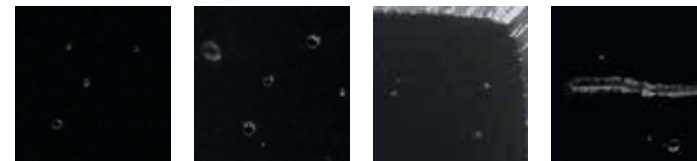


Light Sand-through  
Shown on stained finish



## EXTRA TIMEWORN

This more aggressive technique includes random rasped corners and edges, worm holes, mars, splits, gouges, small dings and dents for an authentically worn look.



Wormholes    Dents    Rasping    Mars & Splits  
Shown on painted finish



Wormholes    Dents    Rasping    Mars & Splits  
Shown on stained finish



## EXTRA HEWN

This more aggressive technique features burnished sand-through on corners and raised profiles along with sanding on sharp profiles to expose underlying wood for all species and colors in the Emerge line. Unlike, Hewn, Extra Hewn is a RANDOM sand-through technique varying the number of corners and raised profiles receiving burnished sand-through and the sanding of sharp profiles. As with normal aging, the worn edges will vary within individual doors and throughout the entire room.



Aggressive Sand-through  
Shown on painted finish



Aggressive Sand-through  
Shown on stained finish





# KEMPER®

Deep Roots. High Expectations.™

 **EMERGE™ SERIES**  
Premium Semi-Custom Cabinetry

 **CHOICE™ SERIES**  
Semi-Custom Cabinetry

 **ECHO™ SERIES**  
Value Semi-Custom Cabinetry

---

Styles, product availability and construction may vary slightly from those shown in this book due to material availability and/or design evolution. Specifications are subject to change without notice. Customer service is available if your design requires verification of product availability and specifications.

Product photography and illustrations have been reproduced as accurately as printing technologies permit. To ensure highest satisfaction, we strongly recommend you view an actual sample for best color, wood grain and finish representation.

## Kemper® has a Limited Lifetime Warranty.

For terms and conditions, please visit: [www.kempercabinets.com/warranty](http://www.kempercabinets.com/warranty)

Front cover image: TATE INSET Maple Mindful Gray Paint, Coconut Paint and Shanley Maple Morel Stain



[kempercabinets.com](http://kempercabinets.com)

#KemperCabinets

© 2020 MasterBrand Cabinets, Inc. All rights reserved.